

HAWAI'I CAREER PATHWAY SYSTEM HANDBOOK



ARTS AND COMMUNICATION

BUSINESS

HEALTH SERVICES

INDUSTRIAL AND ENGINEERING TECHNOLOGY

NATURAL RESOURCES

PUBLIC AND HUMAN SERVICES



CTE

CAREER AND TECHNICAL EDUCATION

HAWAI'I CAREER PATHWAY SYSTEM HANDBOOK

Express Yourself in **ARTS AND COMMUNICATION**

Develop an analytical eye for the art and media that infuse the world around you. The Arts and Communication Pathway focuses on connecting formal structures of artistic expression to audience perspectives in careers spanning fashion and technology; digital media; and the visual, performing, and written arts.

Lead the Way in the World of **BUSINESS**

Why answer to the chief executive officer, when you can be one? Business is the foundation for all industries. The diversity of skills and concepts such as technology, finance, customer service, marketing, organizational behavior, and management learned in the Business Pathway applies to careers in all of the pathways.

Examine the Scope of **HEALTH SERVICES**

Make a difference in people's lives through diagnostic and clinical health work, biotechnology medical research, and health and nutrition services. Learn medical terminology, the functions of the body systems, and the treatment and prevention of diseases and disorders in the Health Services Pathway.

Build the Future in **INDUSTRIAL AND ENGINEERING TECHNOLOGY**

Interested in designing, engineering, developing, and building solutions to address society's problems and needs? Solve problems, connect people and places, and make the world run in the diverse career opportunities available in the Industrial and Engineering Technology Pathway.

Sustain the World in **NATURAL RESOURCES**

Feed, clothe, and shelter humankind through occupations that cultivate, use, analyze, manage, and sustain natural resources. The Natural Resources Pathway offers opportunities to make the best use of natural resources in order to meet the basic needs of the world's population.

Serve Your Community in **PUBLIC AND HUMAN SERVICES**

Have a knack for working with people? Enjoy collaboration and teamwork? Consider the broad array of options in the Public and Human Services Pathway with career opportunities in culinary and hotel operations, education, legal and protective services, social sciences, and human services.

Something For Everyone

What is the Hawai'i Career Pathway System?

The Hawai'i Career Pathway System is a framework of broad groupings of career specialties/occupations that are called pathways. The specialties/occupations included in each of the Pathways have common skills and knowledge. All occupations are included in the Hawai'i Career Pathway System.

How many Career Pathways are there?

The Hawai'i Career Pathway System has six pathways:

- Arts and Communication
- Business
- Health Services
- Industrial and Engineering Technology
- Natural Resources
- Public and Human Services

What is the purpose of the Hawai'i Career Pathway System?

The Hawai'i Career Pathway System provides an organizing tool for all educational levels—kindergarten through college—to provide a context for exploring career options and a framework to link learning to the skills and knowledge needed for future success.

How can the Hawai'i Career Pathway System be used?

One use for the Hawai'i Career Pathway System is as a tool for career awareness and exploration. Identifying various occupations within each of the Career Pathways is a good start to developing career exploration activities.

The six Career Pathways in the Hawai'i Career Pathway System are linked to a short version of an occupational interest inventory included in this Handbook. Taking the interest inventory may help identify career interests and determine which of the six Career Pathways should be pursued.

While career exploration is valuable for all, special needs students such as second language learners or those with disabilities have limited role models and may face stereotyped expectations. Introducing students to broad career pathways and the numerous occupations within each pathway expands possibilities for all students.

HAWAI'I CAREER PATHWAY SYSTEM

CAREER AND TECHNICAL EDUCATION

What is Career and Technical Education?

Career and Technical Education (CTE) is an educational program that aligns academic standards with technical knowledge and skills to prepare students for careers in current or emerging occupations and further education. CTE is the only educational program in which course content is guided by business and industry input.

How are the Hawai'i Career Pathway System and Career and Technical Education linked?

CTE courses are not required for all occupations but CTE courses can help everyone get a head start on career preparation. The Hawai'i Career Pathway System is the framework for CTE programs of study and provides the structure for career guidance and educational planning, standards development, and assessment.

What are Career and Technical Education Programs of Study?

CTE programs of study, in compliance with federal legislation, offer a sequence of courses to prepare students for the workplace as well as further education. At the high school level, a CTE program of study begins with a Pathway-specific core course followed by a second-year cluster course. Some programs of study also include a third-year concentration course. A specific academic course is also required in all high school CTE programs of study. CTE programs of study at the community college level include all CTE-related degree and/or certificate programs.

What is included in a Career and Technical Education Pathway Core Course?

Each of the six Career Pathways begins with a core course that provides an overview of all occupations within a particular Career Pathway. The CTE pathway core course allows students to explore a variety of occupational opportunities within a particular Pathway while learning work-related skills and knowledge common to all occupations within the Pathway.

What is included in a Career and Technical Education Pathway Cluster Course?

A CTE pathway cluster course is the second-year course in a CTE program of study. The cluster course focuses on more specific occupational requirements for a sub-grouping of occupations within a particular Career Pathway. For example, a student who has completed a Business Pathway Core Course might select a second-year Business Pathway Cluster Course such as Marketing, Management, or Accounting.

What is included in a Career and Technical Education Pathway Concentration Course?

A CTE pathway concentration course is the third-year course in a CTE program of study. The concentration course focuses on more specific occupational requirements requiring advanced skills and knowledge for a sub-grouping of occupations within the cluster. For example, a student who has completed the Business Pathway Core Course and the Business Pathway Management Cluster Course might select a third-year Concentration course such as Human Resource Management or Travel Industry Management.

How is Career and Technical Education Program of Study course content determined?

Pathway Advisory Councils composed of business and industry representatives from across the State guide each of the six Career Pathways. The skills and knowledge content for all CTE program of study courses is based on standards that have been validated by statewide Pathway Advisory Councils.

How is student mastery of Career and Technical Education Program of Study course content assessed?

CTE students take statewide on-line assessments to determine their mastery of CTE course content. The statewide assessment assures that all students, regardless of the high school they attend, have mastered the same course content standards.

How are students assessed for performance-based mastery of Career and Technical Education Program of Study course content?

A special performance-based assessment (PBA) event is conducted to determine student proficiency in applying the skills and knowledge learned in CTE programs of study. A PBA requires that students develop a solution/product/strategy to resolve a need or problem specified by a business or industry. Within a 24-hour period of time, students must analyze the need or problem, develop a response, and prepare a presentation defending their response. Students present and defend their responses to panels of business and industry representatives who judge the appropriateness of the solution/product/strategy and determine performance-based mastery of CTE program of study course content.

Can Career and Technical Education students earn college credits while in high school?

Articulation agreements between the Hawai'i Department of Education (HIDOE) and two- and four-year colleges and universities have been formalized for some CTE programs of study. These agreements grant college credit free of charge to high school students who have successfully completed a CTE program of study and all requisites included in the agreement. The formal CTE agreements between the HIDOE and the University of Hawai'i Community Colleges System are known as Dual Credit Articulated Programs of Study (DCAPS).

Are Career and Technical Education students eligible for Honors Recognition Certificates?

Students who meet the requirements of a Hawai'i High School Diploma with a cumulative GPA of 3.0 or above, complete a CTE program of study, and meet all specified requirements are eligible for Honors Recognition Certificates.

ARTS AND COMMUNICATION CAREER PATHWAY

OCCUPATIONAL EXAMPLES

Interested in these occupations?

OCCUPATIONAL CLUSTER	OCCUPATIONAL EXAMPLES		
FASHION ARTS AND TECHNOLOGIES	<ul style="list-style-type: none"> • Costume Designer • Fashion Designer 	<ul style="list-style-type: none"> • Fashion Illustrator • Pattern Maker 	<ul style="list-style-type: none"> • Stylist • Textile Designer
MEDIA ARTS AND TECHNOLOGIES	<ul style="list-style-type: none"> • 3D Artist • Animator • Art Director • Concept Artist • Game Designer • Graphic Artist 	<ul style="list-style-type: none"> • Grip Technician • Interface Designer • Layout Artist • Photographer • Publisher • Radio Broadcaster 	<ul style="list-style-type: none"> • Sound Designer • Sound Engineer • Technical Assistant • Videographer • Visual Effect Artist
PERFORMING ARTS	<ul style="list-style-type: none"> • Actor • Dancer • Choreographer • Composer 	<ul style="list-style-type: none"> • Conductor • Director • Lighting Designer • Music Arranger 	<ul style="list-style-type: none"> • Producer • Set Construction Worker • Set Designer
VISUAL ARTS	<ul style="list-style-type: none"> • Appraiser • Art Critic • Art Maintenance Specialist • Art Preservation Administrator • Art Restorer • Arts Educator 	<ul style="list-style-type: none"> • Arts Organizer • Docent Guide • Exhibit Constructor • Exhibit Curator • Framer • Gallery Administrator 	<ul style="list-style-type: none"> • Museum Director/Curator • Museum Educator • Research Director • Researcher • Slide Maker
WRITTEN ARTS	<ul style="list-style-type: none"> • Copywriter • Editor • Journalist 	<ul style="list-style-type: none"> • Novelist • Proofreader • Publisher 	<ul style="list-style-type: none"> • Reporter • Screenwriter • Script Writer

Start your career pathway in these programs of study



ARTS AND COMMUNICATION CAREER PATHWAY

CAREER AND TECHNICAL EDUCATION ARTS AND COMMUNICATION PATHWAY

PROGRAMS OF STUDY

OCCUPATIONAL CLUSTER	PROGRAM OF STUDY	PROGRAM OF STUDY CORE COURSE	PROGRAM OF STUDY CLUSTER COURSE	PROGRAM OF STUDY CONCENTRATION COURSE	PROGRAM OF STUDY REQUIRED ACADEMIC COURSE
FASHION ARTS AND TECHNOLOGY	FASHION DESIGN	Arts and Communication	Fashion Design		Geometry or Equivalency
MEDIA ARTS AND TECHNOLOGIES	ANIMATION	Arts and Communication	Digital Media Technology	Animation	Expository Writing or Equivalent
	BROADCAST MEDIA	Arts and Communication	Digital Media Technology	Broadcast Media	
	DIGITAL MEDIA	Arts and Communication	Digital Media Technology		
	GAME DESIGN	Arts and Communication	Digital Media Technology	Gaming	
	GRAPHIC DESIGN I	Arts and Communication	Graphic Design Technology I		
	GRAPHIC DESIGN II	Arts and Communication	Graphic Design Technology I	Graphic Design Technology II	
WEB DESIGN	Arts and Communication	Digital Media Technology	Web Design		
ENTREPRENEURSHIP	ENTREPRENEURSHIP	Arts and Communication	Any Arts and Communication Cluster Course	Entrepreneurship	Cluster Required Academic Course



BUSINESS CAREER PATHWAY

OCCUPATIONAL EXAMPLES

Interested in these occupations?

OCCUPATIONAL CLUSTER	OCCUPATIONAL EXAMPLES		
ACCOUNTING	<ul style="list-style-type: none"> Account Clerk Accountant Auditor Bill and Account Collector Bookkeeper 	<ul style="list-style-type: none"> Corporate Accountant Cost Estimator Electronic Tax Filer Financial Analyst Financial Clerk 	<ul style="list-style-type: none"> Financial Manager Forensic Accountant Revenue Agent Tax Accountant Tax Examiner and Collector
BUSINESS LAW	<ul style="list-style-type: none"> Arbitrator Lawyer 	<ul style="list-style-type: none"> Legal Assistant Mediator/Conciliator 	<ul style="list-style-type: none"> Paralegal
FINANCE	<ul style="list-style-type: none"> Actuary Bank Manager Chief Financial Officer Claims Adjustor Economist 	<ul style="list-style-type: none"> Financial Advisor/Planner Investment Analyst Loan Officer Mortgage Broker Real Estate Broker 	<ul style="list-style-type: none"> Sales Agent Securities, Commodities, and Financial Services Agent Teller Underwriter
MANAGEMENT	<ul style="list-style-type: none"> Administrative Services Manager Compensation and Benefits Manager/Analyst Executive Food Service Manager General Manager Hotel and Lodging Manager 	<ul style="list-style-type: none"> Human Relations Clerk Human Resources Manager/Specialist Logistician Management Analyst Meeting, Convention, and Event Planner 	<ul style="list-style-type: none"> Operations Manager Personnel Director Purchasing Manager Sales Manager Training and Development Manager/Specialist Travel Agent
MANAGEMENT INFORMATION SYSTEMS	<ul style="list-style-type: none"> Application Developer Chief Technology Officer Computer and Information Systems Manager Computer Hardware Engineer Computer Programmer 	<ul style="list-style-type: none"> Computer Support Specialist Computer Systems Analyst Database Administrator Hardware Administrator Information Security Analyst Network Architect 	<ul style="list-style-type: none"> Network Technician Networks and Computer Systems Administrator Software Engineer System Administrator Web Developer
MARKETING	<ul style="list-style-type: none"> Account Executive Buyer Cashier Customer Service Representative Data Analyst/Statistician Distribution Manager 	<ul style="list-style-type: none"> Insurance Sales Agent International Marketing Specialist Inventory Clerk Layout Specialist Product Developer Public Relations Manager 	<ul style="list-style-type: none"> Public Relations Specialist Sales Associate Store Manager Survey Researcher Telemarketer Wholesale and Manufacturing Sales Representative
OFFICE ADMINISTRATION TECHNOLOGY	<ul style="list-style-type: none"> Administrative Assistant Chief Information Officer 	<ul style="list-style-type: none"> Data Base Manager Data Entry Clerk 	<ul style="list-style-type: none"> Office Manager Records Technician/File Clerk
RETAILING	<ul style="list-style-type: none"> Buyer Cashier 	<ul style="list-style-type: none"> Purchasing Agent 	<ul style="list-style-type: none"> Retail Salesperson
ENTREPRENEURSHIP	<ul style="list-style-type: none"> Business Consultant 	<ul style="list-style-type: none"> Entrepreneur 	

Start your career pathway in these programs of study

BUSINESS CAREER PATHWAY

CAREER AND TECHNICAL EDUCATION BUSINESS PATHWAY

PROGRAMS OF STUDY

OCCUPATIONAL CLUSTER	PROGRAM OF STUDY	PROGRAM OF STUDY CORE COURSE	PROGRAM OF STUDY CLUSTER COURSE	PROGRAM OF STUDY CONCENTRATION COURSE	PROGRAM OF STUDY REQUIRED ACADEMIC COURSE
ACCOUNTING	ACCOUNTING I	Business	Accounting I		Economics or Equivalent
	ACCOUNTING II	Business	Accounting I	Accounting II	
BUSINESS LAW	BUSINESS LAW	Business	Business Law		
FINANCE	FINANCE	Business	Finance		
MANAGEMENT	HUMAN RESOURCES MANAGEMENT	Business	Management	Human Resources Management	
	MANAGEMENT	Business	Management		
	TRAVEL MANAGEMENT	Business	Management	Travel Industry Management	
MANAGEMENT INFORMATION SYSTEMS	MANAGEMENT INFORMATION SYSTEMS	Business	Management Information Systems		
	ORACLE CERTIFICATION	Fundamentals of Database Control and Functions	Special Programming Special Database and Applications		
MARKETING	MARKETING	Business	Marketing		
OFFICE ADMINISTRATION TECHNOLOGY	OFFICE ADMINISTRATION	Business	Office Administration		
RETAILING	RETAILING	Business	Retail		
ENTREPRENEURSHIP	ENTREPRENEURSHIP	Business	Any Business CTE Program of Study Cluster Course	Entrepreneurship	



HEALTH SERVICES CAREER PATHWAY

OCCUPATIONAL EXAMPLES

Interested in these occupations?

OCCUPATIONAL CLUSTER	OCCUPATIONAL EXAMPLES		
CLINICAL	<ul style="list-style-type: none"> • Audiologist • Chiropractor • Dental Assistant • Dentist • Emergency Medical Technician • Home Care Aide • Language Pathologist • Licensed Practical Nurse • Massage Therapist 	<ul style="list-style-type: none"> • Medical Assistant • Medical Doctor • Naturopath • Nurse's Aide • Occupational Therapist • Pharmacist • Pharmacy Technician • Physical Therapist Aide 	<ul style="list-style-type: none"> • Physician Assistant • Psychiatrist • Psychologist • Registered Nurse (ADN) • Registered Nurse (BSN) • Respiratory Assistant • Respiratory Therapist • Speech Pathologist
DIAGNOSTIC	<ul style="list-style-type: none"> • Diagnostic Imaging Assistant • Diagnostic Medical Sonographer • EEG Technician 	<ul style="list-style-type: none"> • Medical Laboratory Technician • Medical Technologist • Pathologist 	<ul style="list-style-type: none"> • Phlebotomist Laboratory Assistant • Radiological Technologist • Radiologist
HEALTH AND NUTRITION	<ul style="list-style-type: none"> • Dietetic Technician • Dietitian Aide 	<ul style="list-style-type: none"> • Nutritionist • Registered Dietitian 	<ul style="list-style-type: none"> • Sports Nutritionist
MEDICAL BIOTECHNOLOGY	<ul style="list-style-type: none"> • Biochemist • Biomedical Chemist • Biostatistician • Forensic Scientist • Geneticist 	<ul style="list-style-type: none"> • Lab Assistant-Genetics • Microbiologist • Molecular Biologist • Quality Assurance Technician 	<ul style="list-style-type: none"> • Quality Control Technician • Research Assistant • Scientist • Toxicologist
SUPPORT SERVICES	<ul style="list-style-type: none"> • Biomedical Engineer • Biomedical Technician • Central Services Director • Central Services Technician 	<ul style="list-style-type: none"> • Environmental Health and Safety Officer • Hospital Maintenance Engineer • Industrial Hygienist 	<ul style="list-style-type: none"> • Materials Coordinator • Transport Services Coordinator • Transporter

Start your career pathway in these programs of study

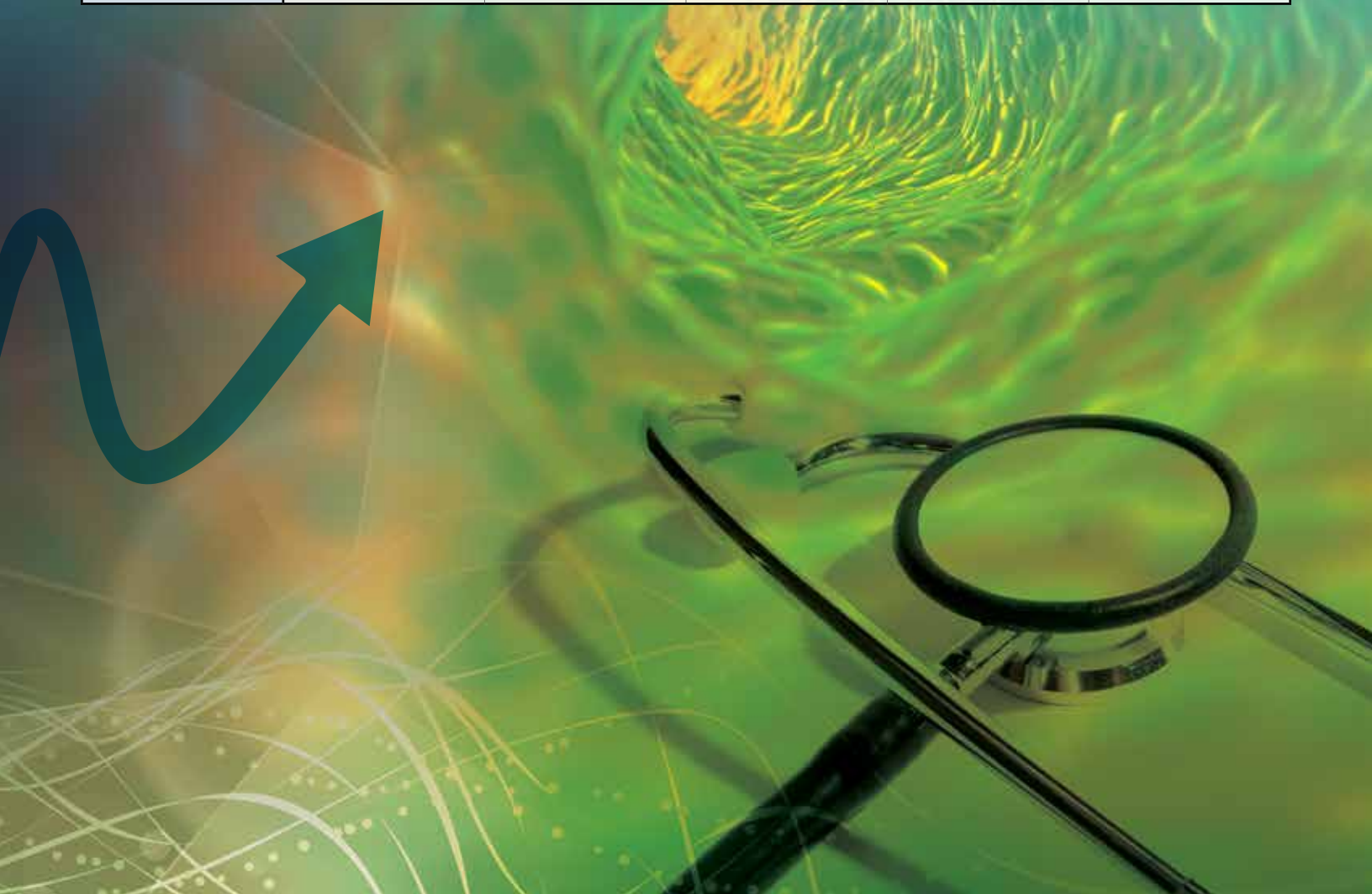


HEALTH SERVICES CAREER PATHWAY

CAREER AND TECHNICAL EDUCATION HEALTH SERVICES PATHWAY

PROGRAMS OF STUDY

OCCUPATIONAL CLUSTER	PROGRAM OF STUDY	PROGRAM OF STUDY CORE COURSE	PROGRAM OF STUDY CLUSTER COURSE	PROGRAM OF STUDY CONCENTRATION COURSE	PROGRAM OF STUDY REQUIRED ACADEMIC COURSE
CLINICAL HEALTH	CLINICAL HEALTH	Health Services	Clinical Health		Biology or Equivalent
	EMERGENCY MEDICAL SERVICES	Health Services	Clinical Health	Emergency Medical Services	
	HEALTH INFORMATICS	Health Services	Clinical Health	Health Informatics	
	NURSE'S AIDE TRAINING	Health Services	Clinical Health	Nurse's Aide Training	
HEALTH AND NUTRITION	NUTRITION	Health Services	Health and Nutrition		
MEDICAL BIOTECHNOLOGY	MEDICAL BIOTECHNOLOGY	Health Services	Medical Biotechnology		
ENTREPRENEURSHIP	ENTREPRENEURSHIP	Health Services	Any Health Services Program of Study Cluster Course	Entrepreneurship	



INDUSTRIAL AND ENGINEERING TECHNOLOGY CAREER PATHWAY

OCCUPATIONAL EXAMPLES

*Interested in
these occupations?*

OCCUPATIONAL CLUSTER	OCCUPATIONAL EXAMPLES		
BUILDING AND CONSTRUCTION	<ul style="list-style-type: none"> • Brickmason • Building Inspector • Carpenter • Crane Operator 	<ul style="list-style-type: none"> • Electrician • Elevator Technician • Glazier • Plaster and Stucco Mason 	<ul style="list-style-type: none"> • Plumber • Roofer • Stonemason • Tile and Marble Setter
DESIGN AND ENGINEERING	<ul style="list-style-type: none"> • Architect • Biofuel Engineer • Civil Engineer • Drafter 	<ul style="list-style-type: none"> • Fuel Cell Technician • Materials Engineer • Mechanical Engineer 	<ul style="list-style-type: none"> • Mechatronic Technician • Nanotechnology Engineer • Surveyor
ELECTRONIC AND COMPUTER SYSTEMS	<ul style="list-style-type: none"> • Cable Technician • Computer Engineer • Electronic Inspector 	<ul style="list-style-type: none"> • Microsystems Technician • Nanosystem Technician 	<ul style="list-style-type: none"> • Software Engineer • Systems Engineer
ELECTRONIC TECHNOLOGY	<ul style="list-style-type: none"> • Communications Systems Engineer • Electrical and Electronic Drafter • Electrical Engineer 	<ul style="list-style-type: none"> • Electrical Installation Technician • Electrical Systems Planner • Electro-Mechanical Technician 	<ul style="list-style-type: none"> • Electronic Engineer or Technician • Energy Engineer
MANUFACTURING	<ul style="list-style-type: none"> • Automotive Body Worker • Brazer • Fabricator Mechanic • Industrial Engineer or Technician 	<ul style="list-style-type: none"> • Machinist Mechanic • Mechanical Engineer • Nuclear Power Technician • Photonic Technician 	<ul style="list-style-type: none"> • Production Engineer • Robotic Technician • Semiconductor Processor • Sheet Metal Technician
TRANSPORTATION SYSTEMS	<ul style="list-style-type: none"> • Aircraft Mechanic • Atmospheric Scientist • Automotive Technician • Aviation Safety Inspector 	<ul style="list-style-type: none"> • Avionic Systems Technician • Heavy Equipment Mechanic • Marine Technician 	<ul style="list-style-type: none"> • Motorcycle Service Technician • Traffic Safety Inspector • Transportation Planner

*Start your career pathway
in these programs of study*

INDUSTRIAL AND ENGINEERING TECHNOLOGY CAREER PATHWAY

CAREER AND TECHNICAL EDUCATION HEALTH SERVICES PATHWAY

PROGRAMS OF STUDY

OCCUPATIONAL CLUSTER	PROGRAM OF STUDY	PROGRAM OF STUDY CORE COURSE	PROGRAM OF STUDY CLUSTER COURSE	PROGRAM OF STUDY CONCENTRATION COURSE	PROGRAM OF STUDY REQUIRED ACADEMIC COURSE
BUILDING AND CONSTRUCTION	BUILDING AND CONSTRUCTION I	Industrial and Engineering Technology	Building and Construction I		Geometry or Equivalent
	BUILDING AND CONSTRUCTION II	Industrial and Engineering Technology	Building and Construction I	Building and Construction II	
	ELECTRICAL INSTALLATION	Industrial and Engineering Technology	Electricity and Electronics		
DESIGN AND ENGINEERING	DESIGN TECHNOLOGY I	Industrial and Engineering Technology	Design Tech I		Algebra I or Equivalent
	DESIGN TECHNOLOGY II	Industrial and Engineering Technology	Design Tech I	Design Tech II	
	ENGINEERING TECHNOLOGY I	Industrial and Engineering Technology	Engineering Technology I		Algebra II or Equivalent
	ENGINEERING TECHNOLOGY II	Industrial and Engineering Technology	Engineering Technology I	Engineering Technology II	
ELECTRONIC AND COMPUTER SYSTEMS	COMPUTER NETWORKING	Industrial and Engineering Technology	Networking Fundamentals and LAN		Algebra I or Equivalent
	CYBERSECURITY	Industrial and Engineering Technology	Networking Fundamentals and LAN	Cybersecurity	
	A+ CERTIFICATION	A+ Certification Intro/A+ Certifications Computer Systems	A+ Certification Operating Systems/ Internship		
	CISCO CERTIFICATION	Networking Fundamentals and LAN	WAN and Networking Architecture		
	COMPUTER TECHNICIAN	Industrial and Engineering Technology	Computer Electronics		
ELECTRONIC TECHNOLOGY	ELECTRONICS AND ELECTRICAL ENGINEERING I	Industrial and Engineering Technology	Electronic Technology I		
	ELECTRONICS AND ELECTRICAL ENGINEERING II	Industrial and Engineering Technology	Electronic Technology I	Electronic Technology II	
MANUFACTURING	AUTOBODY REPAIR AND REBURBISHING	Industrial and Engineering Technology	Autobody Repair and Refinishing I		Physical Science or Equivalent
	ADVANCED AUTOBODY REPAIR AND REBURBISHING	Industrial and Engineering Technology	Autobody Repair and Refinishing I	Autobody Repair and Refinishing II	
	METAL WORKING TECHNOLOGY I	Industrial and Engineering Technology	Metals Technology I		
	METAL WORKING TECHNOLOGY II	Industrial and Engineering Technology	Metals Technology I	Metals Technology II	
TRANSPORTATION SYSTEMS	AUTOMOTIVE TECHNOLOGY I	Industrial and Engineering Technology	Automotive Technology I		
	AUTOMOTIVE TECHNOLOGY II	Industrial and Engineering Technology	Automotive Technology I	Automotive Technology II	
ENTREPRENEURSHIP	ENTREPRENEURSHIP	Industrial and Engineering Technology	Any Industrial and Engineering Program of Study Cluster Course	Entrepreneurship	Cluster Required Academic Course



NATURAL RESOURCES CAREER PATHWAY

OCCUPATIONAL EXAMPLES

Interested in these occupations?

OCCUPATIONAL CLUSTER	OCCUPATIONAL EXAMPLES		
AGRICULTURE/ AQUACULTURE PRODUCTION	<ul style="list-style-type: none"> • Ag-Aqua Engineer • Agricultural Extension Agent • Agricultural Inspector • Agricultural Manager • Agricultural Science Teacher • Agricultural Technician 	<ul style="list-style-type: none"> • Agriculture and Food Science Technician • Agronomist • Aquacultural Manager • Farm Equipment Technician 	<ul style="list-style-type: none"> • Farm Labor Contractor • Field Manager • Irrigation Engineer Technician • Marine Biologist • Soil Scientist
ANIMAL SYSTEMS	<ul style="list-style-type: none"> • Animal Science Teacher • Animal Scientist • Beekeeper 	<ul style="list-style-type: none"> • Farm Manager • Livestock Extension Agent • Range Manager 	<ul style="list-style-type: none"> • Veterinarian • Veterinary Assistant
ENVIRONMENTAL RESOURCE MANAGEMENT	<ul style="list-style-type: none"> • Biofuel Processing Technician • Biomass Engineer • Bio-Resource Manager • Cartographer • Conservation Scientist • Environmental Compliance Inspector • Environmental Engineer • Environmental Resource Technician 	<ul style="list-style-type: none"> • Environmental Science Teacher • Environmental Scientist • Fish and Game Warden • Forest and Conservation Technician • Forester • Forestry Manager • Geologist • Geophysical Technician 	<ul style="list-style-type: none"> • Hydroelectric Plant Technician • Hydrologist • Hydrology Technician • Marine Biologist • Park Naturalist • Soil and Water Conservationist • Wildlife Biologist • Zoologist
HORTICULTURE	<ul style="list-style-type: none"> • Arboriculturist • Architectural Landscaper • Botanist • Entomologist 	<ul style="list-style-type: none"> • Ethnobotanist • Field Technician • Floral Designer • Floriculturist 	<ul style="list-style-type: none"> • Greenhouse Technician • Grounds Manager • Nursery Technician • Soil and Plant Scientist
NATURAL RESOURCES BIOTECHNOLOGY	<ul style="list-style-type: none"> • Biochemist • Biophysicist 	<ul style="list-style-type: none"> • Biotechnology Technician • Field Manager 	<ul style="list-style-type: none"> • Genetic Engineer • Geneticist

Start your career pathway in these programs of study



NATURAL RESOURCES CAREER PATHWAY

CAREER AND TECHNICAL EDUCATION NATURAL RESOURCES PATHWAY

PROGRAMS OF STUDY

OCCUPATIONAL CLUSTER	PROGRAM OF STUDY	PROGRAM OF STUDY CORE COURSE	PROGRAM OF STUDY CLUSTER COURSE	PROGRAM OF STUDY CONCENTRATION COURSE	PROGRAM OF STUDY REQUIRED ACADEMIC COURSE
AGRICULTURE/ AQUACULTURE PRODUCTION	NATURAL RESOURCE BUSINESS DEVELOPMENT	Natural Resources	Natural Resources Production I	Natural Resources Management	Economics or Equivalent
	NATURAL RESOURCES PRODUCTION I	Natural Resources	Natural Resources Production I		
	NATURAL RESOURCES PRODUCTION II	Natural Resources	Natural Resources Production I	Natural Resources Production II	
ANIMAL SYSTEMS	ANIMAL SYSTEMS I	Natural Resources	Animal Systems I		
	ANIMAL SYSTEMS II	Natural Resources	Animal Systems I	Animal Systems II	
ENVIRONMENTAL RESOURCE MANAGEMENT	ENVIRONMENTAL AND CONSERVATION SCIENCES	Natural Resources	Environmental Resource Management	Conservation	Biology or Equivalent
	ENVIRONMENTAL RESOURCE MANAGEMENT	Natural Resources	Environmental Resource Management		
	FISHERIES	Natural Resources	Environmental Resource Management	Fisheries	
	FORESTRY	Natural Resources	Environmental Resource Management	Forestry	
HORTICULTURE	PLANT DESIGN AND MANAGEMENT	Natural Resources	Plant Systems I	Plant Systems II	
	PLANT SYSTEMS I	Natural Resources	Plant Systems I		
NATURAL RESOURCES BIOTECHNOLOGY	NATURAL RESOURCES BIOTECHNOLOGY I	Natural Resources	Natural Resources Biotechnology I		
	NATURAL RESOURCES BIOTECHNOLOGY II	Natural Resources	Natural Resources Biotechnology I	Natural Resources Biotechnology II	
ENTREPRENEURSHIP	ENTREPRENEURSHIP	Natural Resources	Any Natural Resources Program of Study Cluster Course	Entrepreneurship	Cluster Required Academic Course

PUBLIC AND HUMAN SERVICES CAREER PATHWAY

OCCUPATIONAL EXAMPLES

Interested in these occupations?

OCCUPATIONAL CLUSTER	OCCUPATIONAL EXAMPLES		
EDUCATION	<ul style="list-style-type: none"> • Administrative Assistant • Career Guidance Technician • Counselor • Counselor's Aide • Curriculum Aide 	<ul style="list-style-type: none"> • Education Specialist • Educational Assistant • Librarian • Preschool Director • Preschool Teacher 	<ul style="list-style-type: none"> • Principal • Speech Therapist • Teacher • Teacher's Aide
HUMAN SERVICES	<ul style="list-style-type: none"> • Community Aide • Pastor • Pastoral Assistant 	<ul style="list-style-type: none"> • Psychologist • Research Assistant 	<ul style="list-style-type: none"> • Social Service Assistant • Youth Worker
LEGAL AND PROTECTIVE SERVICES	<ul style="list-style-type: none"> • Bailiff • Caseworker • Corrections Guard • Corrections Officer • Disaster Management Team Coordinator • Federal Agent • Federal Park Police Officer 	<ul style="list-style-type: none"> • Firefighter • Forensics Investigator • Guard/Officer • Hotel Security Officer • Judge • Law Clerk • Lawyer • Legal Secretary 	<ul style="list-style-type: none"> • Paralegal • Paramedic • Park Ranger • Police Officer • Private Investigator • Probation Officer • Warden
SOCIAL SCIENCES	<ul style="list-style-type: none"> • Anthropologist • Economist • Environmental Specialist • Lobbyist 	<ul style="list-style-type: none"> • Political Scientist • Politician • Research Aide • Research Assistant 	<ul style="list-style-type: none"> • Statistics Clerk • Survey Worker • Urban Planner
SERVICE AND HOSPITALITY	<ul style="list-style-type: none"> • Bell Attendant • Executive Chef • Food and Beverage Manager • Front Desk Agent 	<ul style="list-style-type: none"> • Guest Services/Concierge • Housekeeper • Pastry Chef • Prep Cook 	<ul style="list-style-type: none"> • Reservations/Sales Agent • Short-Order Cook • Sous Chef

Start your career pathway in these programs of study

PUBLIC AND HUMAN SERVICES CAREER PATHWAY

CAREER AND TECHNICAL EDUCATION PUBLIC AND HUMAN SERVICES PATHWAY

PROGRAMS OF STUDY

OCCUPATIONAL CLUSTER NAME	PROGRAM OF STUDY	PROGRAM OF STUDY CORE COURSE	PROGRAM OF STUDY CLUSTER COURSE	PROGRAM OF STUDY CONCENTRATION COURSE	PROGRAM OF STUDY REQUIRED ACADEMIC COURSE
EDUCATION	EXPLORATIONS IN EDUCATION	Public and Human Services	Explorations in Education		Psychology or Equivalent
	EARLY CHILDHOOD EDUCATION	Public and Human Services	Explorations in Education	Early Childhood Education	
	ELEMENTARY EDUCATION	Public and Human Services	Explorations in Education	Elementary Education	
	SECONDARY EDUCATION	Public and Human Services	Explorations in Education	Secondary Education	
SERVICE AND HOSPITALITY	CULINARY I	Public and Human Services	Culinary I		Biology or Equivalent
	CULINARY II	Public and Human Services	Culinary I	Culinary II	
	HOSPITALITY SERVICES	Public and Human Services	Hotel Operations		Psychology or Equivalent
ENTREPRENEURSHIP	ENTREPRENEURSHIP	Public and Human Services	Any Public and Human Services Program of Study Cluster Course	Entrepreneurship	Cluster Required Academic Course



Which Career Pathway is right for you?

RESULTS OF THE RIASEC TEST

R = Realistic

These people are often good at mechanical or athletic jobs. Good college majors for Realistic people are...

- Agriculture
- Health Assistant
- Computers
- Construction
- Mechanic/Machinist
- Engineering
- Food and Hospitality

Related Pathways

Natural Resources
Health Services
Industrial and Engineering Technology
Arts and Communication

I = Investigative

These people like to watch, learn, analyze and solve problems. Good college majors for Investigative people are...

- Marine Biology
- Engineering
- Chemistry
- Zoology
- Medicine/Surgery
- Consumer Economics
- Psychology

Related Pathways

Health Services
Business
Public and Human Services
Industrial and Engineering Technology

A = Artistic

These people like to work in unstructured situations where they can use their creativity. Good majors for Artistic people are...

- Communications
- Cosmetology
- Fine and Performing Arts
- Photography
- Radio and TV
- Interior Design
- Architecture

Related Pathways

Public and Human Services
Arts and Communication

S = Social

These people like to work with other people, rather than things. Good college majors for Social people are...

- Counseling
- Nursing
- Physical Therapy
- Travel
- Advertising
- Public Relations
- Education

Related Pathways

Health Services
Public and Human Services

E = Enterprising

These people like to work with others and enjoy persuading and performing. Good college majors for Enterprising people are:

- Fashion Merchandising
- Real Estate
- Marketing/Sales
- Law
- Political Science
- International Trade
- Banking/Finance

Related Pathways

Business
Public and Human Services
Arts and Communication

C = Conventional

These people are very detail oriented, organized and like to work with data. Good college majors for Conventional people are...

- Accounting
- Court Reporting
- Insurance
- Administration
- Medical Records
- Banking
- Data Processing

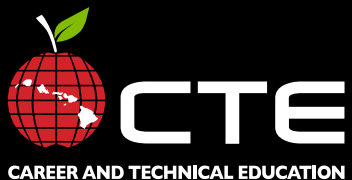
Related Pathways

Health Services
Business
Industrial and Engineering Technology



OFFICE OF THE STATE DIRECTOR *for*
CAREER AND TECHNICAL EDUCATION
www.hawaii.edu/cte

The University of Hawai'i is an Equal Opportunity Affirmative Action Institution



Name _____

Date _____

CAP Teacher _____

RIASEC REFLECTION

**Use the *Career Pathway Handbook* to complete this worksheet.

Record Your RIASEC Results

My scores:

R	I	A	S	E	C

My Interest Code (take the three letters with the highest scores and record them here):

INTEREST CODE		

My Career Pathway (Arts and Communication, Business, Health Services, Industrial and Engineering Technology, Natural Resources, Public and Human Resources) Selections:

Pathway #1 _____

Pathway #2 _____

Reflection:

1. What is it about ***Pathway #1*** that you find appealing (e.g. pay, travel, flexibility, working with people, etc...)?

2. What can you do now, while you are in high school, to prepare yourself for ***Pathway #1***? Identify specific tasks or action plan (e.g. meet with counselor, courses, volunteer, etc...)

Name _____

Date _____

CAP Teacher _____

3. What is it about **Pathway #2** that you find appealing (e.g. pay, travel, flexibility, working with people, etc...)?

4. What can you do now, while you are in high school, to prepare yourself for **Pathway #2**? Identify specific tasks or action plan (e.g. meet with counselor, courses, volunteer, etc...)

5. Look back in your *Career Pathway Handbook* and select another Pathway that looks interesting. List the name, description, and types of occupations related to this pathway. Is it a pathway that you would consider? Why or why not?

6. You selected 2 career pathways and examined other pathways. Why do you think it's important to have more than 1 career pathway option? (explain)

7. How does this RIASEC lesson / activity prepare you for life after high school?
